

SPECIFICATIONS

Insulation Resistance:	1,000MΩ min. at 500V DC
Withstanding Voltage:	500V ACrms for 1 minute
Contact Resistance:	15mΩ max. at 10mA
Current Rating:	1A
Operating Temp. Range:	-20°C to +85°C
Soldering Temperature:	260°C / 5 sec.

MATERIALS AND FINISH

Housing:	PBT (glass filled), UL 94V-0 rated
Contacts:	Phosphor Bronze
Plating:	Au over Ni



PART NUMBER

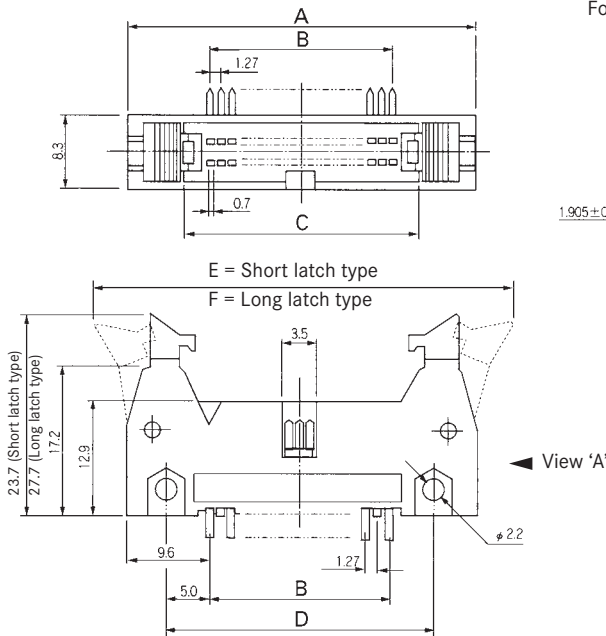
NFP - 20A-01 * 2 BF

Series (plug)	NFP		
No. of Leads	20A-01		
Latch Type:	* 2		
Terminal Type:	BF		
Type of Plating:	Base	Mating Face	Solder Terminals
BF	Ni 2.5~4.5μm	Au 0.3μm min.	Au 0.05μm min.

FEATURES

- Contact pitch 1.27mm connectors for high-density mounting

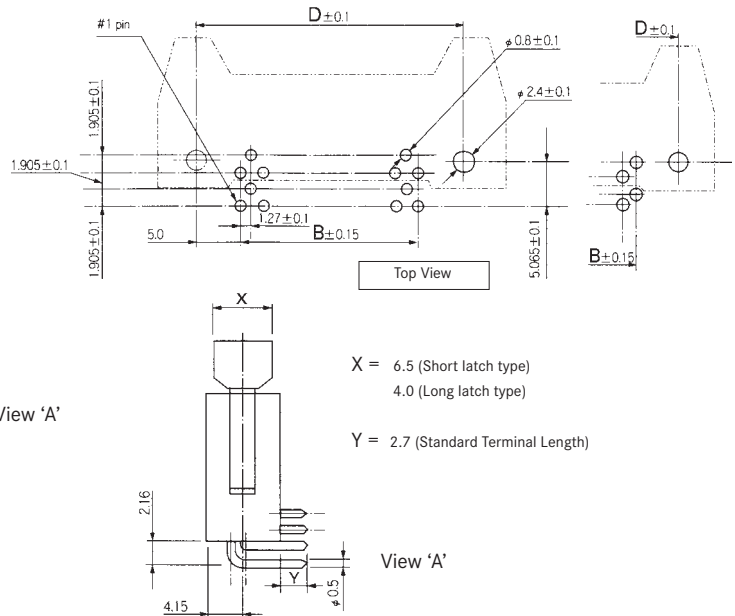
OUTLINE DIMENSIONS



RECOMMENDED PCB LAYOUT

For leads 10, 26, 34 and 50

For all other leads



Standard types see table.

For other versions please contact Yamaichi, minimum order quantity may be required

Part Number	No. of Leads	A	B	C	D	E	F
NFP-10A-0122BF	10	24.28	5.08	11.58	15.08	38.2	40.2
NFP-16A-0122BF	16	28.09	8.89	15.39	18.89	42.0	44.0
NFP-20A-0112BF	20	30.63	11.43	17.93	21.43	44.6	46.6
NFP-26A-0112BF	26	34.44	15.24	21.74	25.24	48.4	50.4
NFP-34A-0112BF	34	39.52	20.32	26.82	30.32	53.5	55.5
NFP-34A-0122BF	34	39.52	20.32	26.82	30.32	53.5	55.5
NFP-40A-0112BF	40	43.33	24.12	30.63	34.13	57.3	59.3
NFP-40A-0122BF	40	43.33	24.12	30.63	34.13	57.3	59.3
NFP-50A-0112BF	50	49.68	30.48	36.98	40.48	63.6	65.6
NFP-60A-0112BF	60	56.03	36.83	43.33	46.83	70.0	72.0
NFP-60A-0122BF	60	56.03	36.83	43.33	46.83	70.0	72.0
NFP-64A-0112BF	64	58.57	39.37	45.87	49.37	72.5	74.5
NFP-64A-0122BF	64	58.57	39.37	45.87	49.37	72.5	74.5
NFP-80A-0112BF	80	68.73	49.53	56.03	59.53	82.7	84.7
NFP-80A-0122BF	80	68.73	49.53	56.03	59.53	82.7	84.7
NFP-100A-0112BF	100	81.43	62.23	68.73	72.23	95.4	97.4
NFP-100A-0122BF	100	81.43	62.23	68.73	72.23	95.4	97.4